

PICTORIAL

PRINTED
PATTERNS

JANUARY
1932



Descriptions and
back views of
these models on
page 12

LOOK FOR . .

the new Smartfit
Foundation Pattern —
it will save your time.

SEE PAGE 13 FOR DETAILS

BEGINNERS! YOU CAN MAKE THIS FROCK IN TWO NIGHTS

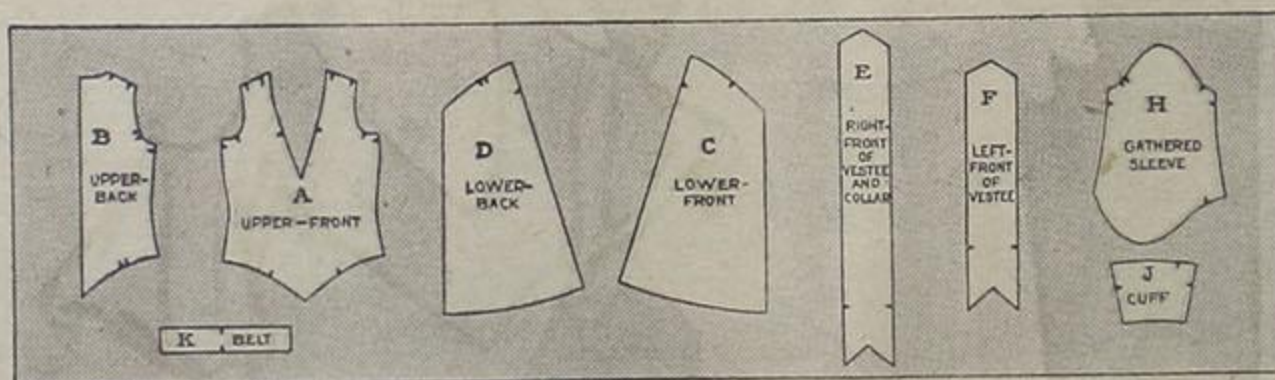


You Can Make It Because

there are only nine pieces in this pattern, which is so easy to use any beginner can make a dress with it—quickly and easily.

You Will Want It Because

this dress has the full sleeves and contrasting collar that Paris adores—smart for miss or matron, it comes in sizes 14 to 48.



It doesn't matter if you've never sewed before—you can make this frock successfully because it's an easy-to-use Pictorial Printed Pattern. This pattern is so complete with instructions that it teaches you how to sew while you use it.

This easy pattern, like all Pictorial Printed Patterns, includes a sewing lesson, a cutting guide, and dressmaking sketches that illustrate the lesson. So, if you read the instructions and look at the pictures you can't go wrong.

5836—Frock 45 cents—1/6. Effective in velvet and crêpe, sheer woolen and satin or two shades of crêpe. Sizes 14 to 48. Size 16 requires 3 5/8 yards 39-inch dark velvet, 5/8 yard 39-inch light crêpe. Width 2 yards.

Everybody Admires It— And It's the First Dress She Ever Made . . .

Here is just one of the thousands of letters we're constantly receiving from beginners who use our patterns.

Pictorial Review Company,
New York, N. Y.

Gentlemen:

I have just finished making my first dress, and am very proud of it. All my friends have admired it, and asked where I got it. I was glad to tell them I made it with a Pictorial Pattern.

I found your pattern very easy to follow, and perfect in fit. I had no trouble at all in using it.

Yours truly,

Anna M. Kubik

329 E. 83rd St., New York City.

That's what they all say—and it's true; our experts made it true, so—

NEW PICTORIAL PATTERNS ARE REALLY MISTAKE-PROOF

. . . If you follow the clear, easy directions we give you with every pattern, you simply can't go wrong. Maybe you used our patterns before; they were always easy, but they're easier now. Maybe you've never so much as hemmed a handkerchief—but you can make a dress, successfully, with a new Pictorial Printed Pattern. Here's why

EVERY PICTORIAL PATTERN INCLUDES—

1. A cutting guide in the size of your pattern.
2. A step-by-step dressmaking lesson that explains clearly every step from A to Z.
3. Printed dressmaking sketches that illustrate the sewing lesson (and it's all easy to do when you see it pictured!).
4. A figure showing how to assemble your pattern correctly into a finished garment.
5. Besides, every pattern piece is marked so you know immediately what it is; all are cut-out to prevent blind cutting of pattern and fabric; the skirt piece has lengthening and shortening lines in proportions correct for fashion and for your figure.

. . . So you see, it's true—any beginner can make a dress, successfully, with a Pictorial Printed Pattern because it is very easy to use. You need not spend a lot of money on expensive clothes—get a Pictorial Pattern now; soon you'll have a smart new dress! Then go to a show with the money you saved!

Published by

THE PICTORIAL REVIEW COMPANY

222 West Thirty-ninth Street, New York

SAN FRANCISCO, CAL., 560 Mission St.
NEW ORLEANS, LA., 417-423 Camp St.
CHICAGO, ILL., 200-206 So. Market St.
ATLANTA, GA., 82-84 North Broad St.

TORONTO 4, Ontario, CAN., 489 College St.
PARIS, FRANCE
21 Rue de Berri (Just off Champs-Élysées)
LONDON, W. 1., ENGLAND
3, 5, 7, 9 Heddon Street, Regent Street

BACKS COME TO THE FRONT IN PARIS' NEW EVENING GOWNS



5913

5916

5915

5913—Frock 65 cents—2/-. Ruffles that curve up in back, and the "bustle-bow"! Sizes 14 to 20 years. Size 16 requires $4\frac{5}{8}$ yards 39-inch satin. Width $3\frac{7}{8}$ yards.

5916—Frock \$1.00—4/-. Here is the 1931 bustle—and deep V back! Sizes 12 to 20 years. Size 16 requires $8\frac{1}{4}$ yards 36-inch coral taffeta. Width about $3\frac{5}{8}$ yards.

5915—Frock \$1.00—4/-. The fashionables turn their backs this year. Sizes 14 to 42. Size 16 requires $4\frac{5}{8}$ yards 39-inch black velvet. Width about $2\frac{3}{8}$ yards.



5913

5916

5915

When you want to stun your audience this season . . . turn your back! . . . and show them our perky modern version of the bustle, as in No. 5916 . . . or the "bustle-bow" and ruffles of No. 5913 . . . or the stunning train and deep-cut back of No. 5915 . . . Nothing above but much below the waist in back is the chic rule . . . For a quick, perfect fit, use the new Smartfit Foundation Pattern, on sale at all pattern counters.

*Pictorial Printed Patterns
all specially priced at
35¢ each*



5908

5908—Frock 35 cents—1/-. Bright steel buttons are new! Sizes 14 to 42. Size 16 requires 2½ yards 54-inch dark wool, 1 yard 54-inch lacy wool. Width of skirt about 2¼ yards.

5912—Frock 35 cents—1/-. Here's a smart fabric alliance. Sizes 14 to 48. Size 16 requires 2¾ yards 54-inch diagonal wool, ⅞ yard 39-inch satin. Width of skirt about 1¾ yard.

5732—Frock 35 cents—1/-. Like a Schiaparelli. Sizes 14 to 42. Size 16 requires 2 yards 54-inch plain wool, ¾ yard 54-inch striped knitted wool. Width about 1½ yard.

5905—Frock 35 cents—1/-. Sizes 14 to 48. Size 16 requires 1¾ yard 54-inch light wool, 1½ yard 54-inch plaid wool, ⅞ yard 39-inch velvet. Width of skirt about 1¾ yard.



5912



5732



5905



It's fashionable now to be economical, not only to make our own frocks, but to make them inexpensively. Begin with a Pictorial Printed Pattern at 35c . . . fashion your frock of wool . . . make it with very little time and effort . . . Pictorial patterns show you how . . . and you have Paris chic at its lowest cost.

Ask at the pattern counter for the circular that

4 The most satisfactory gift of all—the gift that delights the year round—the gift subscription to Pictorial Review

For the lower-priced materials
these models are specially priced
25¢ each



5761



5923



5910



5761 5923 5760 5910

Finding designs as smart as these at a price like this . . . they're only 25 cents each . . . is as smart as it is economical . . . Paris fashionables established them as last-minute favorites, and Pictorial simplified them so that every sewer would look stunning in them and find them easy, quick, and inexpensive to make.

• tells about the new Smartfit Foundation Pattern



5760

5910—Frock 25 cents—1/-. Note decorative pockets. Sizes 14 to 42. Size 16 requires 2½ yards 54-inch plaid wool, ⅝ yard 39-inch velvet. Width at lower edge 2⅝ yards.

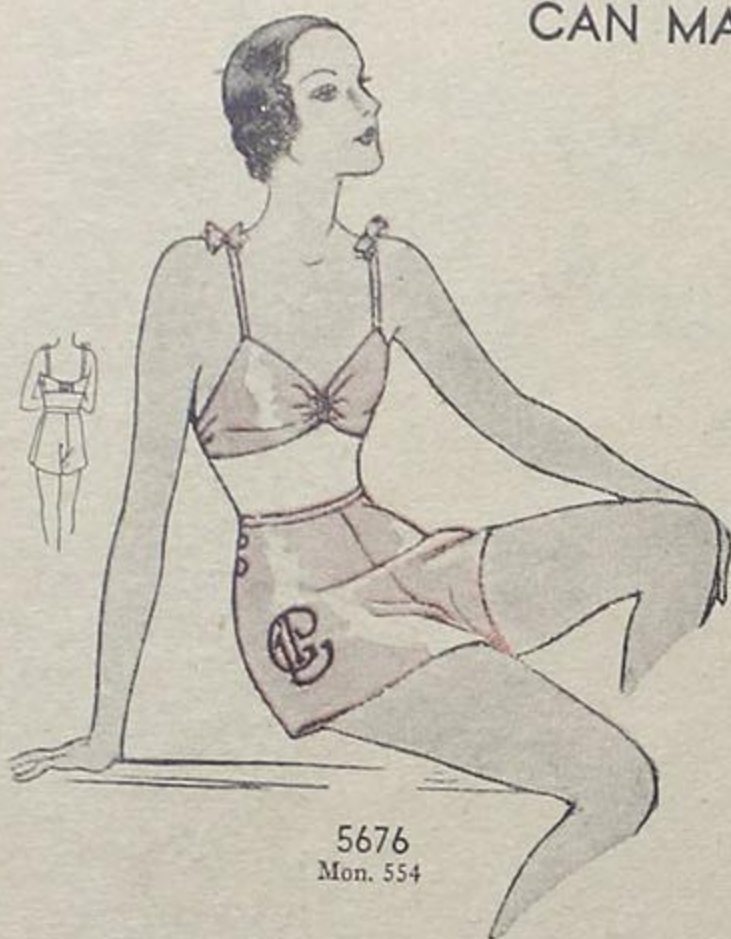
5761—Frock 25 cents—1/-. This has a youthful quality. Sizes 14 to 42. Size 16 requires 2½ yards 54-inch wool, ⅝ yard 39-inch white silk. Width about 2 yards.

5923—Frock 25 cents—1/-. Schiaparelli stresses stripes like this. Sizes 12 to 40. Size 16 requires 2⅝ yards 54-inch striped jersey. Width at lower edge about 1⅝ yard.

5760—Frock 25 cents—1/-. Satin and wool are chic. Sizes 14 to 42. Size 16 requires 1½ yard 39-inch satin, 1⅝ yard 54-inch wool. Width at lower edge about 2¼ yards.

Anyone can sew with Pictorial Printed Patterns—they're easier to use than any other pattern

WHATEVER YOUR BUDGET, YOU
CAN MAKE PARIS LINGERIE!



5676
Mon. 554



5930

5925



5829

5504



5774



5829 5504 5930 5925

Banish All Fitting Problems!

Use the Smartfit Foundation Pattern
to make a muslin master pattern
and your fitting troubles are over

5930—Pajamas 45 cents—1/6. New lines, smart fabric, stunning color combination. Sizes 14 to 40. Size 16 requires 4 1/8 yards 39-inch black satin, 1 yard coral.

5676—Panties and Bandeau 35 cents—1/6. Trim lines. Sizes 14 to 42. Size 16 requires 1 1/4 yard 39-inch crêpe de chine. Monogram 554, 3 ins. high, 60 cts.—2/6.

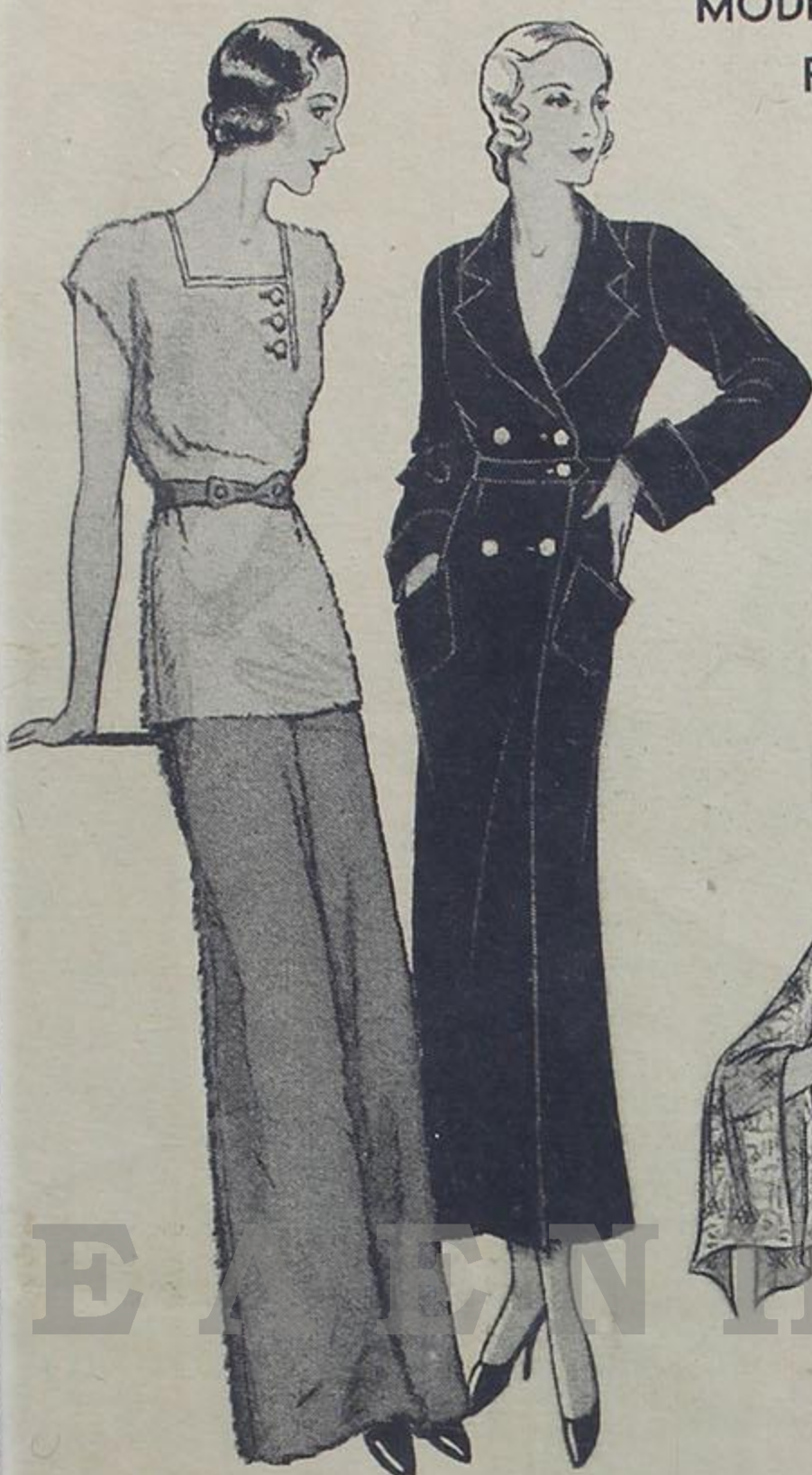
5829—Nightgown 25 cents—1/6. Luxurious but so inexpensive and easy to make. Sizes 16, 20 and 42. Size 16—1 1/8 yard 36-in. allover lace, 2 5/8 yds. 39-inch satin.

5925—Slip 30 cents—1/6. It's everything a slip should be—slim and beautifully fitted with frills at the bottom. Sizes 12 to 40. Size 16—3 3/4 yards 39-inch.

5774—Combination 35 cents—1/6. Slimly molded. Sizes 14 to 42. Size 16 requires 1 5/8 yard 39-inch crêpe de chine, 2 3/4 yards 2-inch lace, 1 1/4 yard ribbon.

5504—Pajamas 45 cents—1/6. An enchanting new costume for home entertaining or lounging. Sizes 14 to 42. Size 16—4 7/8 yds. 39-in. dark, 5/8 yd. 36-in.

MODERNS ARE MAKING THESE
FOR GIFTS—THRIFTILY!



5929

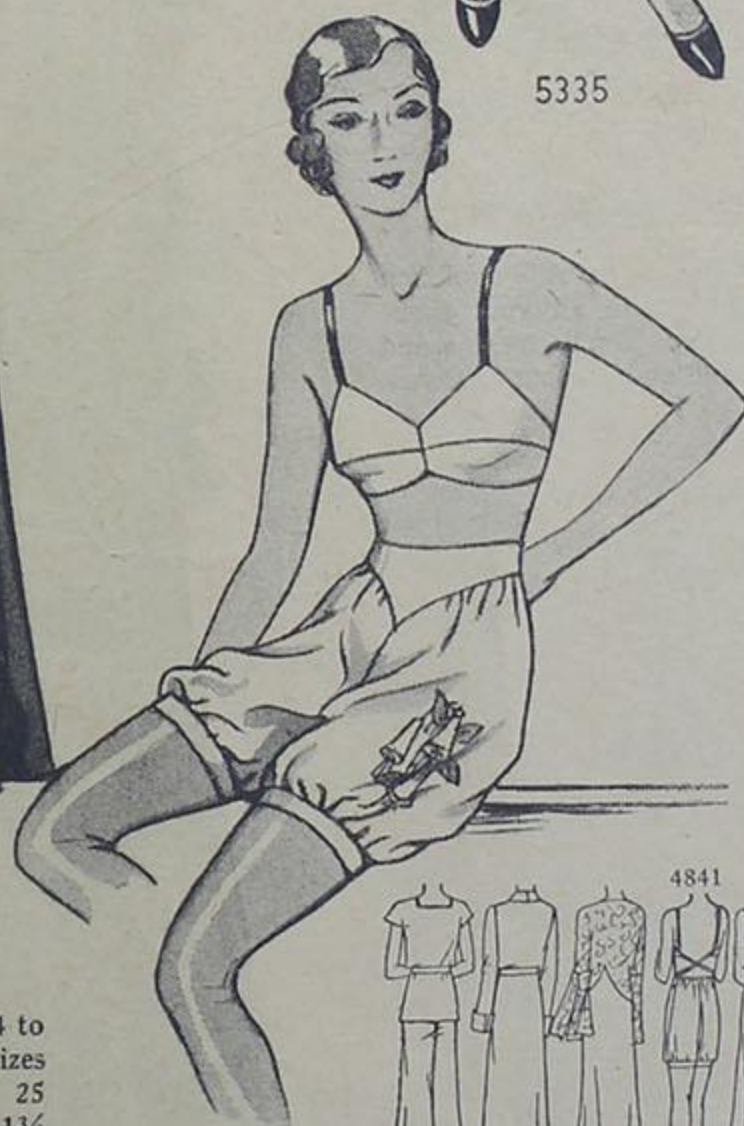
5850



5335



5871



4841

5874

Emb. 12938



5929

5850

5871

5874

5335

**Ask to See the New
Smartfit Foundation Circular**

Every pattern counter has it. It tells you just how the Smartfit Foundation Pattern takes all the uncertainty out of home dressmaking. Read how easy it is to make a master pattern to fit your own measurements and to use it with your fashion patterns.

5929—Pajamas 45 cents—1/6. The costume that's unsurpassed for lounging in comfort and chic. Sizes 12 to 40. Size 16 requires 1 3/4 yard 36-inch light terry cloth, 3 yards dark.

5850—Bathrobe 40 cents—1/6. Steal a hint from college girls and make this swagger robe in black or vivid velveteen. Sizes 14 to 46. Size 16 requires 4 7/8 yards 36-inch velveteen.

5335—Slip 35 cents—1/6. Wear a dark slip that "fits like a glove" under woolen frocks. Sizes 14 to 48. Size 16 requires 2 5/8 yards 39-inch satin, 2 1/8 yards bias-fold tape for trimming.

5871—Negligée 45 cents—1/6. Simple to make, but very French with its pointed seams. Sizes 16, 20 and 42. Size 16 requires 2 1/4 yards 36-inch allover lace, 3 3/8 yards 39-inch soft satin.

4841—Brassière. Sizes 14 to 42. 5874—Knickers. Sizes 26 to 36 waist. Each 25 cents—1/6. Size 16—1 3/8 yd. 39-in. crêpe, 1 1/4 yd. ribbon. Trans. 12938, blue or yellow, 25 cents—1/6.

Solve your Christmas worries and save money. Give your friends a Christmas subscription to Pictorial Review



5922

FOR A PERFECT FIT . . .

Use a Smartfit Foundation Pattern with all your tissue patterns. You'll save time and trouble and prevent mistakes.



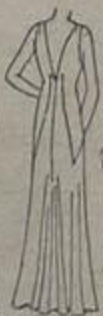
5922



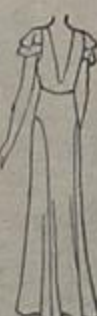
5913



5915



L.W.
5918



L.H.
5919



5913



5915



Little Women
5918

THE NEWEST PARIS FASHIONS VERSIONS FOR EVERY TYPE

Paris insists on romance in its evening wear. No apron frocks, trains, puff sleeves. And romance is not limited by age. To prove it there are No. L. 5917 for mature figures, and No. L. W. 5917 to make slimmer women

5918—Little Women's Frock \$1.00—4/-. Sizes 14½ to 42½. Size 20½ requires 5½ yds. 39-in. black satin. Width about 3¾ yards.

5922—Frock 50 cents—1/6. Sizes 14 to 42. Size 16 requires 3 yards 54-inch striped jersey, ¼ yard green. Width about 2¾ yards.

5913—Frock 65 cents—2/-. Sleek. Sizes 14 to 20 years. Size 16 requires 4½ yards 39-inch black satin. Width about 3¾ yards.

5915—Frock \$1.00—4/-. With a train! Sizes 14 to 42. Size 16 requires 4½ yards 39-inch green velvet. Width about 2¾ yards.



Larger-Hip 5919 Little Women 5917

THIS IN EASILY-MADE VERY TYPE OF FIGURE

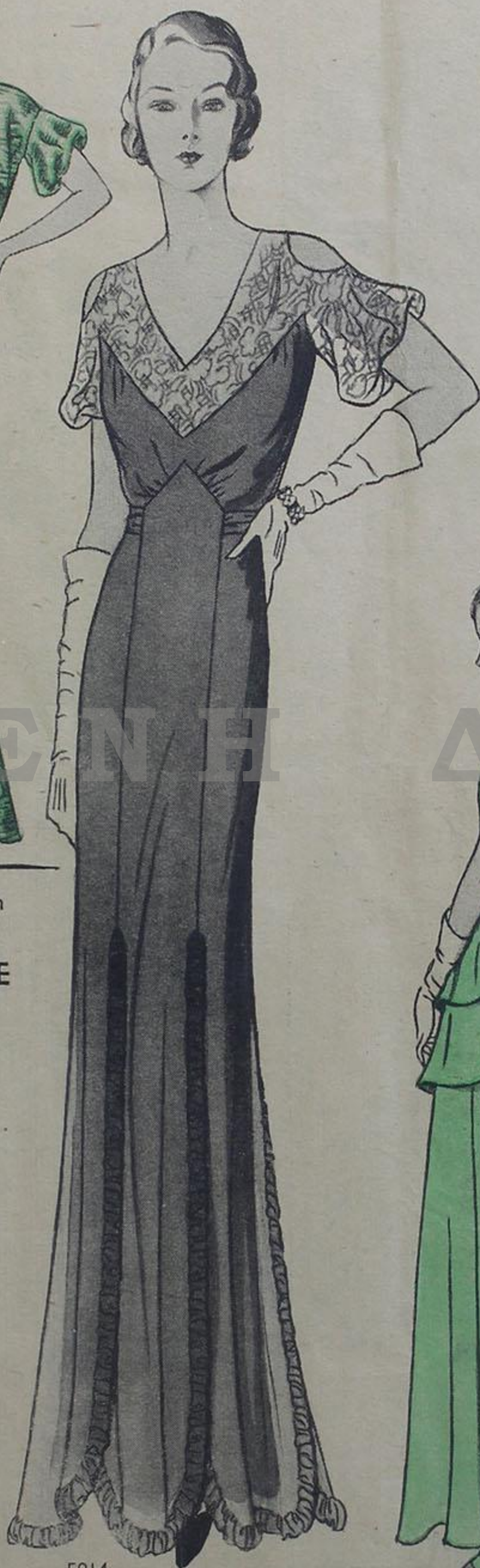
ance this year. Bewitching
puff sleeves herald 1932.
limited by age or type. To
to L. W. 5919, a soft frock
and L. W. 5918 and
ke show her women stately.

5919—Larger-Hip Frock 50 cents
1/6. Sizes 33 to 47. Size 41
quires 4 3/8 yards 39-inch green
chiffon. Width about 3 5/8 yards.

5917—Little Women's Frock 50
cents—1/6. Sizes 12 1/2 to 40 1/2.
Size 20 1/2—4 yds. 36-in. lamé, 3/4
l. 39-in. velvet. Width 2 3/8 yds.

5916—Frock \$1.00—4/-. Roman-
ce! Sizes 12 to 20 years. Size 16
quires 7 1/2 yards 36-inch green
tulle. Width about 3 5/8 yards.

5914—Frock \$1.00—4/-. Sizes 14
to 42. Size 16 requires 5 1/4 yds.
36-in. chiffon, 3/4 yd. 36-in. all-
over lace, 16 5/8 yds. ribbon.



5914



5916



5921

5921—Frock 50 cents—1/6.
Sizes 14 to 42. Size 16 re-
quires 3 1/4 yards 54-inch plaid
woolen, 1/4 yard 54-inch fur
cloth. Width about 1 7/8 yard.



L.W.
5917

5921

5914

5916



5920—Guimpe 25 cents—1/-. Grand collar and sleeves. Sizes 12 to 40. Size 16 requires 1 3/4 yard 39-inch satin. Trans. 13043, b. or y., 40 cents—1/6.

5704—Jacket-Blouse. Sizes 14 to 42. 5864—Skirt. Sizes 27 to 36 waist. Each 35 cents—1/-. Size 16—1 5/8 yard 54-inch dark, 2 1/2 yards diagonal.

5822—Blouse 35 cents—1/-. Make it in colored satin. Sizes 14 to 40. Size 16 requires 2 3/8 yards 39-inch satin. Trans. 12921, b. or y., 40 cts.—1/6.

5928—Blouse 35 cents—1/-. With a velvet skirt, this blouse makes a costume of expensive elegance. Sizes 14 to 42. Size 16—2 5/8 yards 36-in. lamé.

5920—Guimpe. 5923—Frock. Sizes 12 to 40 each. Each 25 cents—1/-. Size 16 requires 1 1/8 yard 54-inch ribbed wool, 2 3/8 yards 54-inch plain woolen.

5704—Jacket-Blouse 35 cents—1/-. Here is a typical Vionnet blouse—cut diagonally! You'll want it. Sizes 14 to 42. Size 16—2 3/8 yards 54-inch.



MANY BLOUSES MAKE A SMALL WARDROBE LOOK IMMENSE!

In sheer wool-like sweaters, in fine silk or lamé . . . with tailored or softer skirts . . . two or three of these simple and simply stunning blouses make the small wardrobe look immense! And they're easy to make!



YOU'LL BE A FASCINATING PERSON IN OUR NEW EASY-TO-MAKE FROCKS

You'll be a new person in the new frocks. Epaulets by day, capelets and puff sleeves by night give you a provocative charm that will make you the belle of every occasion. And you can make these frocks so easily and quickly!

Corresponding Years and Bust Measurements

Years—	14	16	18	20
Bust —	32	34	36	38 40 42 44 46 inches



5538

5711

5538—Frock 45 cents—1/6. Two-piece model. Sizes 12 to 40. Size 16 requires 1½ yd. 54-inch black jersey, 1½ yd. 54-in. coral tweed. Width 1¾ yd.

5711—Frock 50 cents—1/6. Chic shoulder-width. Sizes 14 to 42. Size 16 requires 2¾ yards 39-inch black crêpe, 7/8 yard 39-inch white. Width 2¾ yards.

5804—Frock 45 cents—1/6. Romantic frills. Sizes 12 to 20 years. Size 16 requires 5¾ yards 36-inch gray taffeta, 1¾ yard coral ribbon. Width 3¾ yards.

5916—Frock \$1.00—4/-. A loop and sash end hint at a bustle in back. Sizes 12 to 20 years. Size 16 requires 7½ yards 39-inch black velvet. Width 3¾ yards.

5633—Frock 50 cents—1/6. Smart covered shoulders. Sizes 12 to 40. Size 16 requires 5 yards 39-inch coral chiffon, 3½ yards black ribbon. Width 4 yards.



5804

5633

5916



5538 5711 5804



5916 5633

BOOKS YOU SHOULD HAVE

To be assured of always having the newest and smartest Paris modes, we suggest

PICTORIAL REVIEW FASHION BOOK 25c

In England 1/-

For charm and beauty in your home furnishings and new ideas on all kinds of hand work select

HOME CRAFT & EMBROIDERY

25c

In England 1/-

To learn to make smart clothes expertly and by the simplest and quickest methods we recommend the complete dressmaking course called

MODERN DRESSMAKING by Colette Cartier

25c

In England 1/-

All of these publications are on sale in our Pattern Department.

Descriptions and back views of models on front cover.

5915—Frock \$1.00—4/-. Sizes 14 to 42. Size 16 requires 4½ yds 39-inch black satin. Width about 2½ yds.

5916—Frock \$1.00—4/-. Sizes 12 to 20 years. Size 16 requires 8 yds. 36-in. white taffeta. Width about 3½ yds.

5914—Frock \$1.00—4/-. Sizes 14 to 42. Size 16 requires 5¾ yds 39-inch blue velvet, 16½ yds ribbon for bow.



5915 5916 5914

LARGER-HIP PATTERNS— AN EXCLUSIVE SERVICE

We are proud of
our Larger-Hip
Patterns.

... because they fit
women of average
bust and above-
average hip measure-
ment with flattering
slender lines, and pre-
vent tiresome altera-
tions.

Oregon City, Oregon
Pictorial Review Company,
New York City.

Gentlemen:—

After struggling for years
with ordinary patterns, try-
ing to cut out dresses to
fit me, I discovered your
Larger-Hip Patterns. What
a wonderful help they are;
size 43 L.H. is exactly right
for me.

I can make one of your
Larger-Hip dresses for a
third the cost of a good
ready-made dress, have
better material, and get
more compliments when I
wear it.

Sincerely,
(Signed) Eldo A. Riley

5924—Larger-Hip Frock 50
cents—1/6. Slenderizing di-
agonal seams. Sizes 35 to 45.
Size 41 requires 3½ yds.
54-inch wool. Width 2 yards.

5649—Larger-Hip Frock 50
cents—1/6. Sizes 35 to 45.
Size 41 requires 3¾ yds. 39-
in. chiffon, 2½ yds. 36-in.
allover lace. Width 3½ yds.

5909—Larger-Hip Frock 50
cents—1/6. Sizes 35 to 45.
Size 41 requires 5¾ yards
39-inch black satin, ½ yard
white. Width 2¾ yards.

You'll find more Larger-
Hip Patterns on pages
8 and 9



Larger-Hip
5924

Larger-Hip
5649

Larger-Hip
5909



L.H.
5924 L.H.
5649 L.H.
5909

OURS ARE THE ONLY REAL LITTLE WOMEN'S PATTERNS

An Entirely New and Completely Satisfactory FOUNDATION PATTERN

Here at last is a foundation pattern which really solves all fitting problems for every type of figure. No matter if you are tall or short, stout or slim, well proportioned or large in the hips, there is a Smartfit Foundation Pattern for your type and size.

You can make for yourself a muslin master pattern over which all your tissue patterns can be fitted. If you prefer, you can use the Smartfit Foundation Pattern itself for fitting your other patterns, for these patterns are made of strong, heavy paper which will stand much handling and wear.

You can easily determine which type Smartfit Foundation Pattern you require.

If you are of average height with a hip measurement not more than four inches greater than your bust, you should get No. 25 Average Figure Type.

If you are of about average height and your hips are over five inches larger than your bust measurement, you need No. 50, Larger Hip Type.

If you are about five feet two inches in height you will require No. 75, Little Woman Type.

A booklet containing complete instructions for adjusting and using your Smartfit Foundation Patterns comes with every pattern.

Smartfit Foundation Patterns are sold at Pictorial Pattern Counters. They are \$1.50 each. For further details inquire at the Pictorial Review Pattern counter or write to

THE PICTORIAL REVIEW COMPANY

222 West 39th Street
New York City

Price in England 6/3. For details, write
3-9 Heddon St.—Regent St., London,
W. 1, England

We are proud of
our Little Women
Patterns. . . .

. . . Hundreds of grateful
letters tell us that . . .
. . . Little Women Patterns
prevent alterations . . . and
insure perfect fit . . . and
add graceful height. . . .

San Francisco, Cal.
Sept. 16th, 1931

Pictorial Review Co.,
New York City

Sirs:

For the first time in more
years than I care to remember, I
have found patterns that fit me—
your patterns for "Little Women."

A sixteen year pattern is not
large enough around the hips. I
need a 34" bust and a 39" hip.
Your L.W. patterns are right for
me, because the waistline is
right. . . .

Very truly yours,
(Signed) Hannah Norton Bock,
(Mrs. Henry L. Bock)

5789—Little Women's Frock
50 cents—1/6. Sizes 12½ to
40½. Size 20½ requires 2¾
yards 54-inch light wool, 1¼
yd. dark. Width about 1½ yd.

5794—Little Women's Slip 35
cents—1/-. Sizes 12½ to 44½.
Size 20½ requires 2¾ yards
39-inch crêpe, ¾ yard ribbon
for shoulder straps.

5758—Little Women's Frock
50 cents—1/6. Sizes 12½ to
40½. Size 20½ requires 2¾
yards 54-inch wool, ⅝ yd. 39-
in. crêpe. Width about 2¼ yds.

Little
Women
5794



You'll find more Little
Women's Patterns on
pages 8 and 9

Little
Women
5789

Little
Women
5758

Be thrifty. Save money. Read the best of the new novels first in Pictorial Review

CLOTHES "COUNT" EVER SO MUCH AT SCHOOL . . .



5926



5907
Emb. 12623



5906
Emb. 13093

5926—Frock 30 cents—1/-. The new broad-shouldered treatment. Sizes 8, 10, 12 and 14 years. Size 12—15/8 yd. 54-in. striped jersey, 1/2 yd. plain.

5907—Frock 25 cents—1/-. Sizes 2, 4 and 6 years. Size 6 requires 15/8 yd. 36-in. coral taffeta, 1/2 yd. pink. Trans. 12623, b. or y., 25 cts.—1/3.

5906—Slip 20 cents—9d. Slightly fitted. Sizes 8 to 16 years. Size 10 requires 13/4 yard 39-inch. Transfer 13093, blue or yellow, 45 cents—1/6.



5926 5907 5906

5927—Skirt and Suspenders 25 cents—1/-. Epaulets for the new silhouette. Sizes 4 to 14 years. Size 14 requires 13/4 yard 54-inch black woolen.

5931—Frock 35 cents—1/-. Easy details. Sizes 8 to 16 years. Size 8. requires 2 1/8 yards 39-inch gray crêpe, 3/8 yard 39-inch contrasting.

5911—Frock 40 cents—1/6. A fascinating hint of a bustle. Sizes 10 to 17 years. Size 15 requires 3 3/8 yards 39-inch pink velvet, 1 5/8 yard ribbon.



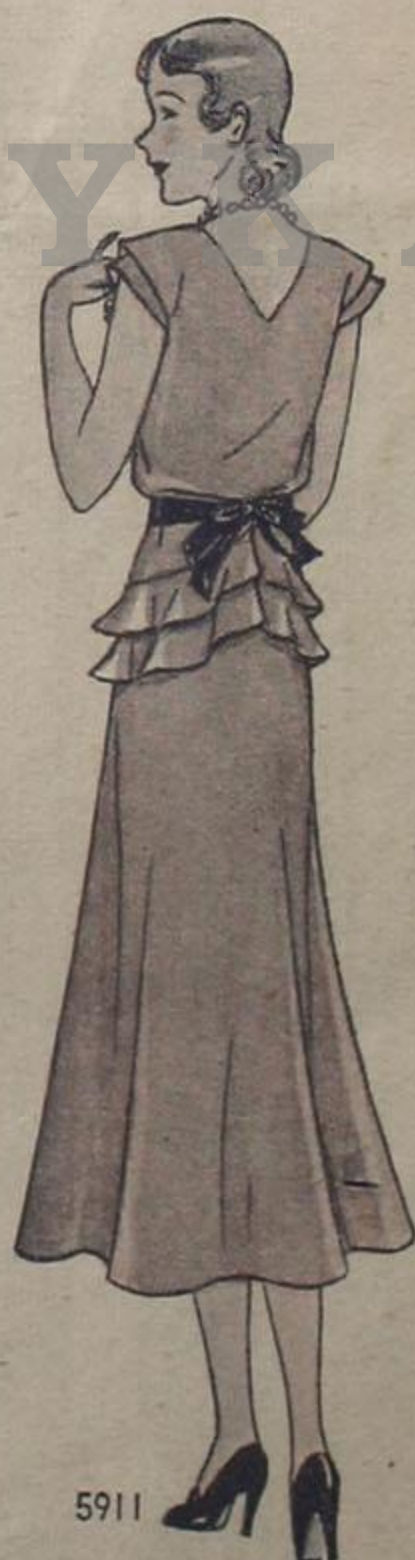
5927 5931 5911



5927



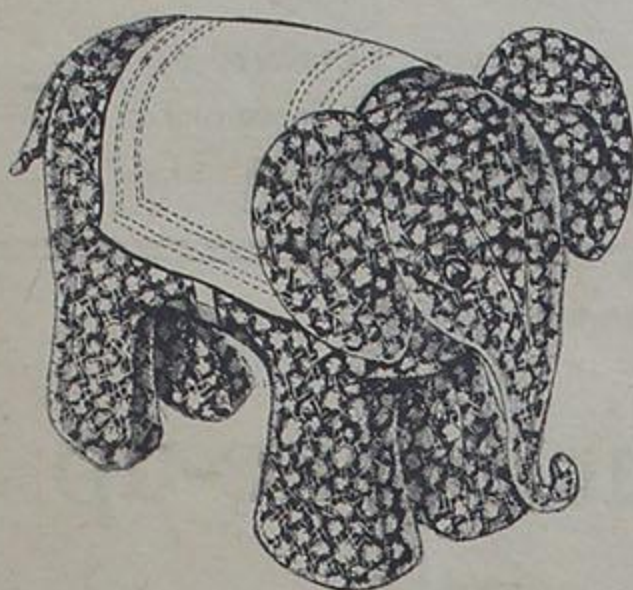
5931



5911

. . . THAT'S WHY GIRLS ARE USING PICTORIAL PATTERNS

YOU DON'T HAVE TO FEED THESE ANIMALS!



246

246—Home Craft and Embroidery Printed Pattern—Elephant, 35 cents—1/-. Includes directions for making elephant 15 inches high and 24 inches long. Furnished stamped on broadcloth with felt blanket and floss, \$1.50—6/-. Takes 2½ lbs. kapok, not supplied, but required for stuffing.

247—Home Craft and Embroidery Printed Pattern—Horse, 35 cents—1/-. Includes directions for making horse 17 inches high and 22 inches long. Furnished stamped on printed broadcloth with floss and instructions, \$1.00—4/-. Takes 2¼ lbs. kapok, not supplied, but required for stuffing.

12698—Transfer Pattern, blue only, 25 cents—1/-, supplies three toy animals for stuffing; a cat 9½ inches wide x 10¾ inches high, a dog 11 x 11 inches, not illustrated, and a rabbit 6¼ inches wide x 15 inches high. Effective in colorful printed cottons.

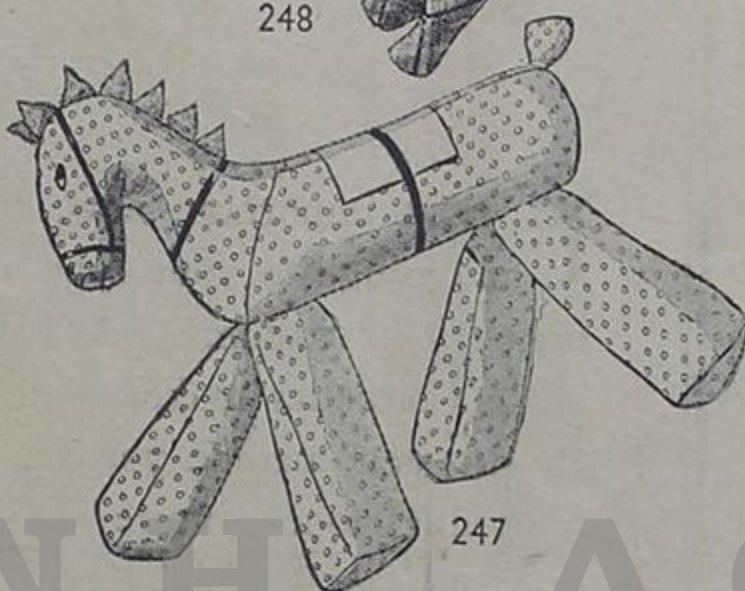


Embroidery 12698



248

248—Home Craft and Embroidery Printed Pattern—Dog, 35 cents—1/-. Includes directions for making dog 11 inches high and 16 inches long. Also furnished stamped on plaid broadcloth with floss and collar, 75 cents—3/-. Requires ¾ lb. kapok, not supplied in the pattern.



247



100

In Canada, duty must be added to prices quoted for these stamped articles.

100—Printed Pattern, 35 cents—1/-. Supplies pattern for duck and rabbit with complete directions for making. Two very cuddly animals that are irresistible in plain and printed calico or gingham, in piqué or broadcloth, in two tones of velvet or in shiny, inexpensive oilcloth.



GRAY STREAKS VANISH

A Matter of Minutes to Erase Years

SIMPLY combing clear, colorless liquid through the hair works the magic. Color comes to every graying strand. No experience required... Results defy detection. Any shade successfully matched—black, brown, auburn, blonde, etc.

For more than 30 years this has been the one most famous, dependable and entirely **SAFE** way to bring youthful color to graying hair. No danger of harm to hair or scalp. Hair stays soft—curls or waves easily. Color will not wash off or stain garments.

More than 3,000,000 women have received this secret of youthful-looking hair from Mary T. Goldman. Not one of these women has ever been asked to take the slightest risk in trying it on her own hair. Nor do we ask you to risk a thing or go to any expense.

Sold at Drug and Department Stores Everywhere

Get full-sized bottle from your druggist or department store on money-back guarantee. Or mail coupon for free test. We send **FREE** the famous Single Lock Package. Snip a lock from your hair and make the test on this. No guessing this way. Use coupon.



MARY T. GOLDMAN
OVER TEN MILLION BOTTLES SOLD

FOR FREE TEST PACKAGE

MARY T. GOLDMAN,
4650 Goldman Bldg., St. Paul, Minn.

Name.....

Street.....

City.....State.....

✓ CHECK COLOR OF HAIR ✓

☐ BLACK ☐ DARK BROWN
☐ MEDIUM BROWN ☐ LIGHT BROWN
☐ DARK RED ☐ LIGHT RED ☐ BLONDE

Hundreds of embroidery designs in "Home Craft and Embroidery," No. 4, 25 cents a copy, 1/- in England

PICTORIAL PRINTED PATTERNS

Don't Forget Our Patterns for Men

You can make men's garments with that important tailored-in-London look. Pictorial Printed Patterns, with their correct lines and easy sewing details, insure a quick, smart success.

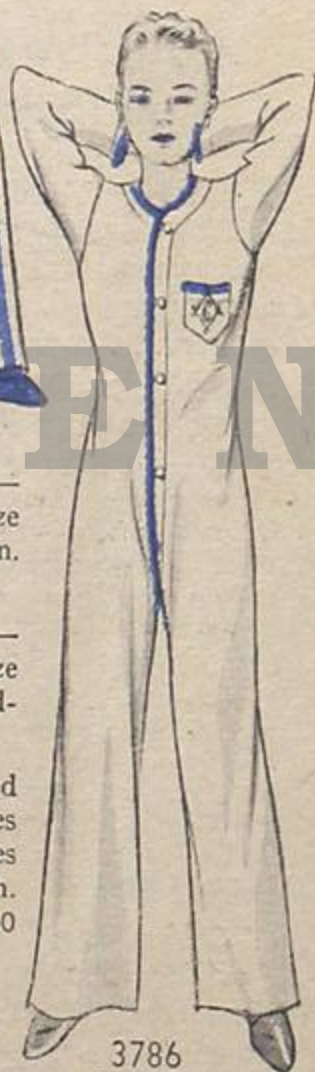


4113

4113—Pajamas 35 cents—1/-. Sizes 32 to 48. Size 40 requires 5 3/8 yds. 36-in. striped, 3/8 yd. plain.

3786—Pajamas 30 cents—1/-. Sizes 4 to 14 yrs. Size 12—3 1/2 yds. 36-in. broadcloth, 2 1/4 yds. binding.

5355—Shirt with Attached Collar 30 cts.—1/-. Sizes 34 to 44. Size 40 requires 2 7/8 yds. 36-in. broadcloth. Monogram 546, 3 ins., 60 cents—2/6.

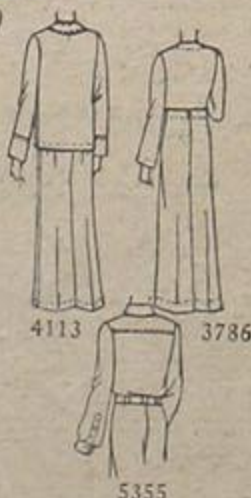


3786

Initial 2
3 ins., 15 cts.—9d.



5355



4113

3786

5355

Match Your Make-up to Your Type

IT is as important, now, to harmonize your powder and rouge to your type as to have your accessories match your costume. And Horne's Salon of Custom-made Cosmetics makes it possible, here in Pittsburgh. By this new method you are analyzed according to the individual tone, texture and coloring of your skin, the color of your hair, and even your personality, and then your best points are emphasized by just the right powder, rouge and lipstick. Then, you see, you don't look "made up" at all!

The matching is done in the little, sequestered Salon on the fourth floor, where one's beauty secrets are as safe as material treasures in a vault.



JOSEPH HORNE CO.

The Best Place to Shop, After All